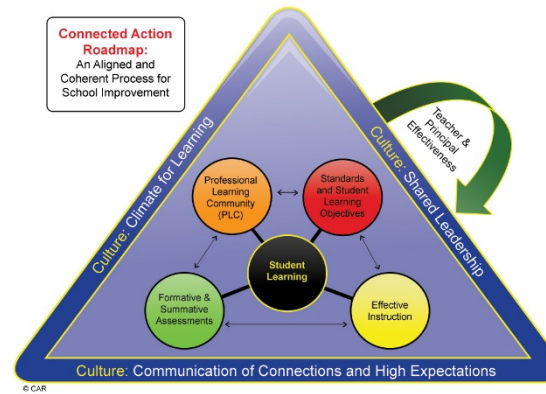
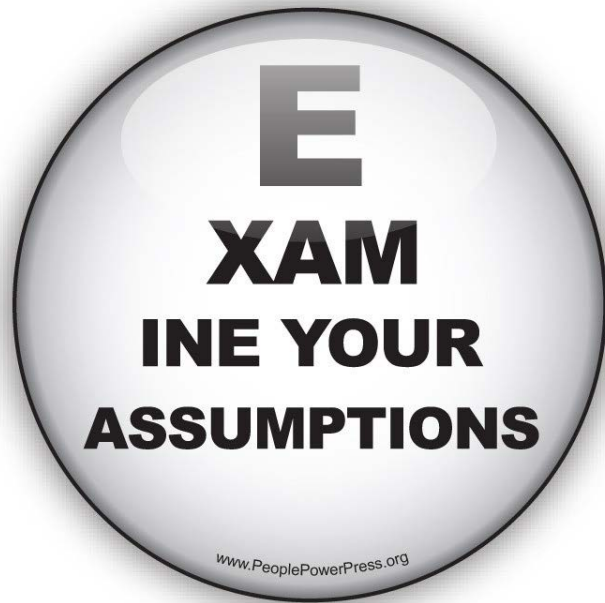


CAR Blended Online Learning Modules



Pilot Program Overview
January 21, 2016
NJPSA/FEA Board Retreat

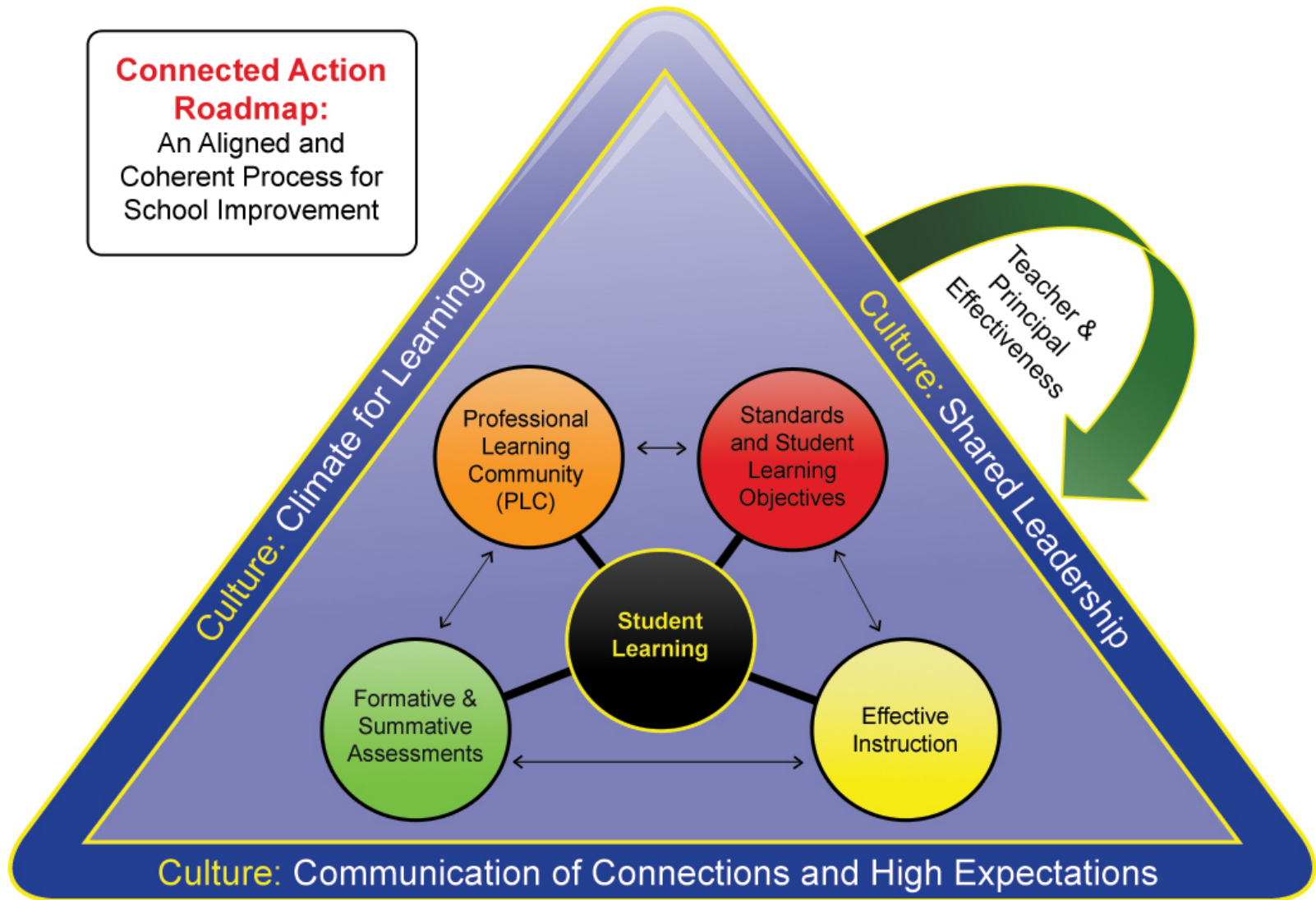


1. Review the commonly misheld assumptions.
2. In your table group, discuss how these assumptions play out in your districts.
3. Whole Group Debrief: Each table group to share 1 or 2 assumptions found to be most prevalent.

Handout: "Common Assumptions for the Instructional Cycle & Professional Learning"

**Connected Action
Roadmap:**

An Aligned and
Coherent Process for
School Improvement



© CAR

Handout: Commissioner Hesse's Vision

PLC Conversations



Developing, Delivering, Reflecting on, and Revising a Viable Curriculum

1. Unpack the standards into clear, specific, student-friendly learning objectives

Leader: What is the SLO? How does it relate to the standard? How will you communicate the goal to the students?

2. Cluster the student learning objectives into units of study

Leader: Are all learning goals taught and assessed in this unit?

3. Create essential questions

Leader: How will you use the essential questions during instruction or for assessment purposes?

4. Create summative assessments including rubrics, exemplars and non-exemplars

Handout: "PLC Conversations"



Unit Title:
Grade Level:
Timeframe:

Essential Questions

|

Common Core Standards

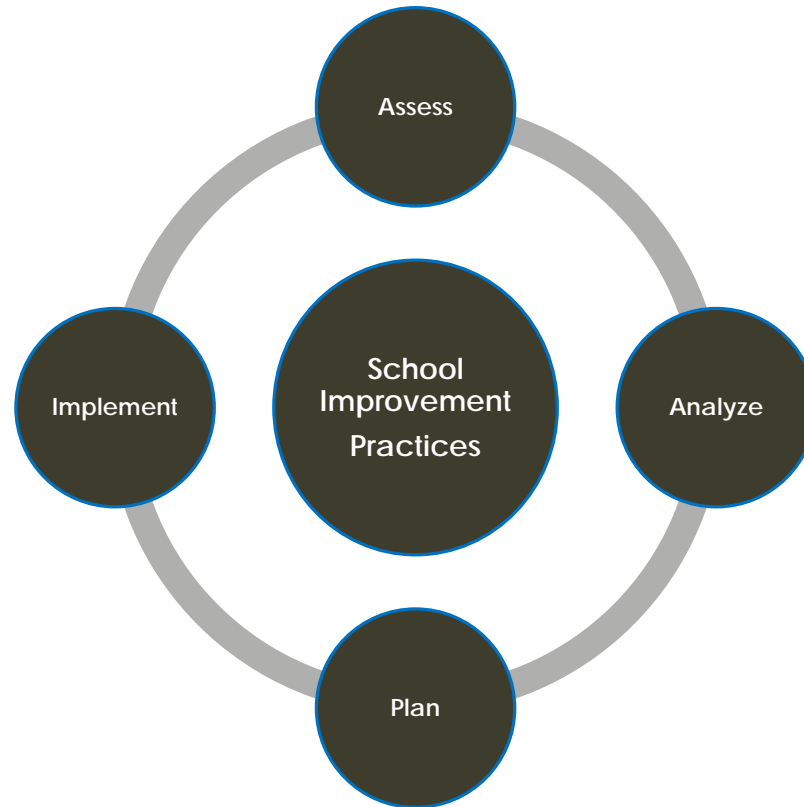
Standards/Cumulative Progress Indicators (Taught and Assessed):

Highlighted Career Ready Practices:



Pre-assessment				
SLO - WALT	Student Strategies	Formative Assessment	Activities and Resources	Reflection
Benchmark Assessment:				
Benchmark Assessment:				
Summative Written Assessments				
Summative Performance Assessment				

THE CAR RUBRIC



Handout: CAR Rubric



Welcome to the New Jersey Department of Education's Blended Online Learning Modules

Each of the courses in this collection has multiple sections with activities, videos, and resources. There are interactive tools and exemplars to allow teachers to gain a better sense of what is expected, and how they might be implemented. These courses promote using the online environment to guide the interaction and collaboration of your Professional Learning Community (PLC) to improve student learning. Please note that in order to access any course, **you must self-enroll**.

Introduction to OPLE

Connected Action Roadmap: An Organized and Coherent Process for School Improvement

Collaborative Learning

Professional Learning Community (PLC)

Personalized Learning

Formative & Summative Assessment

Culture: Communication, Collaboration, and High Expectations

Overview of the Courses

NJLT NJPSAFE

The video thumbnail shows a central play button over a diagram. The diagram is a triangle with a central circle. The triangle's sides are labeled: "Collaborative Learning" on the left, "Personalized Learning" on the right, and "Formative & Summative Assessment" at the bottom. The central circle is labeled "Professional Learning Community (PLC)". A box in the top left corner contains the text "Connected Action Roadmap: An Organized and Coherent Process for School Improvement". At the bottom of the diagram, it says "Culture: Communication, Collaboration, and High Expectations". Below the video player, there is a white box with the text "Overview of the Courses" and logos for NJLT and NJPSAFE.

Video: [Introduction to the Online Professional Learning Exchange](#) (3 Minutes)

Script: [Introduction to the Online Professional Learning Exchange](#)

The courses can be accessed from the category "PLC" on the Course Categories menu. Courses 1-3 are intended to be completed sequentially. The remaining courses may be accessed as needed. **You may self-enroll in any of these courses by clicking on the course titles listed here.**



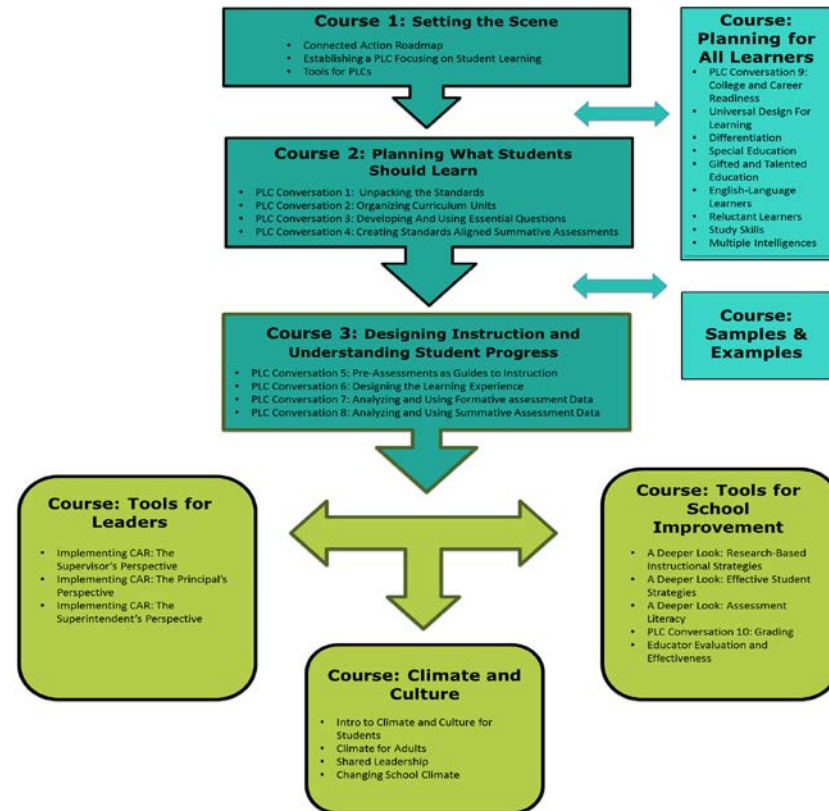
Background

CAR Online Learning Modules

- Collaboration between NJDOE, NJIT, and NJPSA/FEA
- Modules developed based on CAR Framework
- Teachers, Supervisors, Principals & Superintendents Involved: over 50 educators
- Time Frame: March- November, 2015

COURSE OVERVIEW

- Central CAR Courses
- Deeper Dive Courses
- Resources for Leaders



Pilot Program

- Developed in partnership between NJDOE, EIRC and NJPSA/FEA
- Focused on implementation of blended learning modules
- 33 schools
- Time Frame: January 5, 2016 – October 31, 2016



State of New Jersey
Department of Education



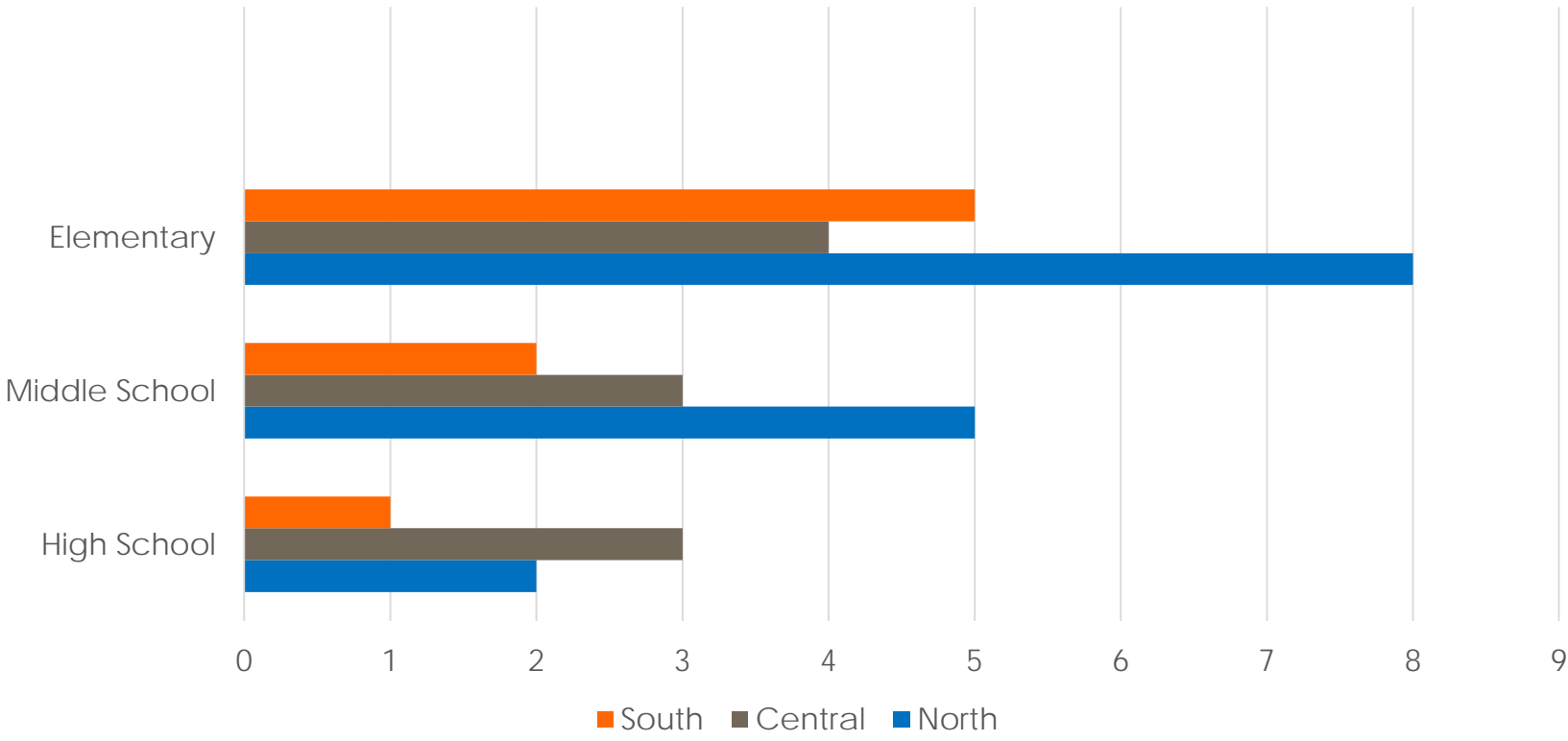


Expectations of Pilot Program

- Pilot Schools will experience:
 - Improved educator practice and student engagement by using collaborative structures to enhance the design and delivery of curriculum, assessment, and instruction
 - Build a foundation of shared leadership responsibilities and collective commitments for higher student achievement

Who Are We Supporting?

Pilot School Demographics





Pilot Schools

Emerging Themes

- ❑ Curriculum, Instruction & Assessment
- ❑ Professional Learning Communities
- ❑ Climate & Culture
- ❑ Coherence

Timeline

- PHASE 1- PILOT PROGRAM
 - APPLICATION WINDOW: Dec. 1-15, 2015
 - LAUNCH OF PILOT SCHOOLS: Jan. 6, 2016 – Nov. 1, 2016
 - COACH-FACILITATORS TRAINING: Jan. 6, 7 and 14, 2016
 - ORIENTATION SESSION FOR PILOT SCHOOLS: Feb. 4, 2016
 - SUPPORTS FOR PILOT SCHOOLS: Needs Assessment, Regional Trainings, Coaching Sessions
 - EVALUATION OF PILOT PROGRAM: Feb. 1 – Nov. 1, 2016

- PHASE 2- STATEWIDE LAUNCH
 - ANTICIPATED TIME FRAME: MAY, 2016
 - REGIONAL TRAININGS & COUNTY CONSORTIA PRESENTATIONS

- PHASE 3- RESOURCES TO SUPPORT DISTRICTS
 - SUMMER INSTITUTE
 - DISTRICT TRAININGS
 - ONLINE SUPPORT

Evaluation of Pilot Program

RESPONSIBILITY: Administered by NJPSA/FEA

PROPOSAL: Submitted by Southern Regional Institute and ETTC (SRI&ETTC) School of Education, Stockton University

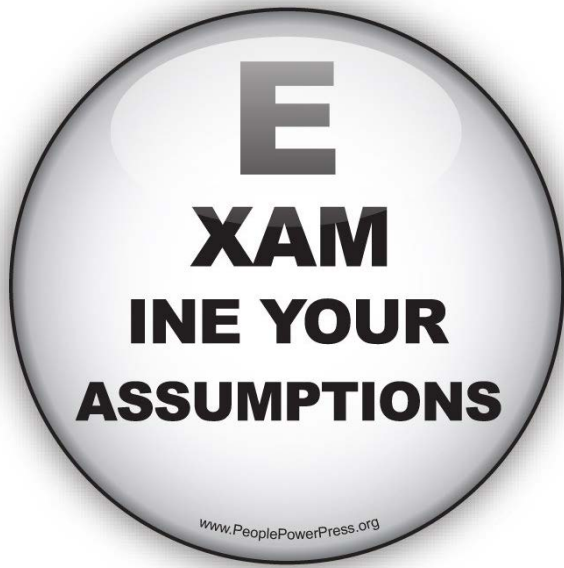
EVALUATION TEAM:

- Kimberly Lebak, Associate Professor of Education at Stockton University and Director of graduate programs in education
- Patricia Weeks, Director of the SRI&ETTC

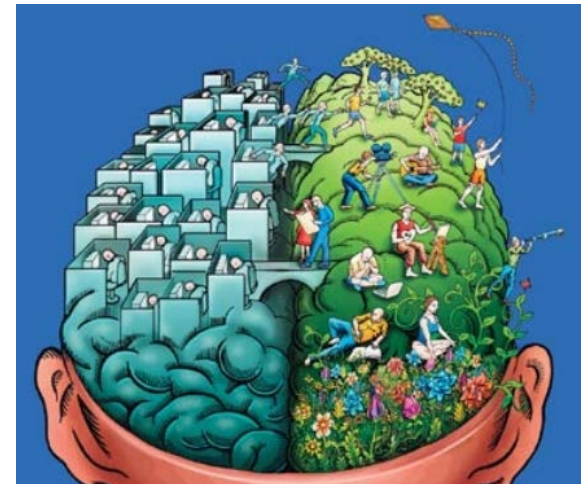
TIMELINE: January 5, 2016 - October 31, 2016

FINAL REPORT: February, 2017

STATUS: Proposal currently under review



Shift Your Perspective



DRIVING WHOLE SYSTEM REFORM

WRONG DRIVERS

- Accountability
- Focus on the quality of the individual teacher and leader
- Technology drives pedagogy
- Fragmented strategies

RIGHT DRIVERS

- Capacity-building with a focus on the learning, instruction, and assessment nexus
- Teamwork
- Pedagogy drives the use of technology
- Systemic strategies