

A vintage brass compass with a wooden handle is positioned in the upper left corner. The compass face shows cardinal and intercardinal directions. The background is a map of the United States, rendered in a cracked, aged, parchment-like texture with a warm, golden-brown color palette. The map shows the outlines of the states and is set against a dark, textured background.

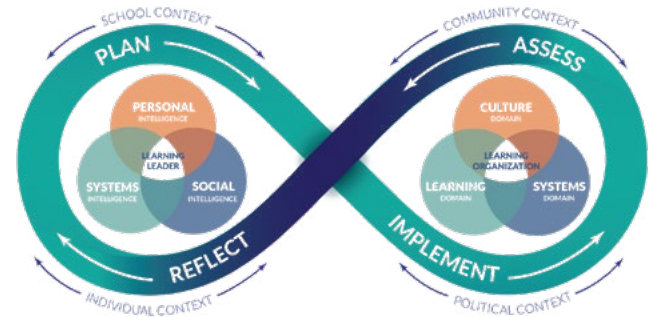
# **The Leader's Compass**

**Find the True North in YOUR Leadership**

# Find YOUR True North

Designed through a nationwide collaborative, this immersive eight-part series will help New Jersey school leaders like you...

- Identify your core values and personal mission.
- Strengthen your leadership capacity.
- Learn and share best practices with a cohort of your colleagues.
- Anticipate roadblocks and develop problem-solving skills.
- Inspire your staff with renewed energy and passion.



## What You'll Experience:

- 8 powerful sessions delivered across 5 dynamic days
- A mix of in-person and virtual learning
- Access to the best practices developed by an 11-state educational leadership collaborative with fresh ideas and new perspectives
- Meaningful connections with peers who are in the field with you and understand your journey
- Tools and strategies to reignite your purpose and lead through self-reflective practice

## Join the Second Cohort!

The journey for the second cohort begins this July at a rate of \$925 for the entire experience. Limited seats available — reserve your spot today.

Register at [www.tinyurl.com/LdrsCompass](http://www.tinyurl.com/LdrsCompass)

## Schedule:

Session 1 (AM): Context and the Domains of the Learning Organization	Jul. 22 (FEA Conference Center)
Session 2 (PM): The Learning Leader in the Learning Organization	9 am - 3 pm, Breakfast & Lunch
Session 3: The School Leader Paradigm Inquiry Process	Aug. 11 (FEA Conference Center)
Session 4: Maximizing the Power of Relationships	9 am - 3 pm, Breakfast & Lunch
Session 5: Creating Hope Through Student-Centered Systems	Oct. 1 (Zoom) 9 am - Noon
Session 6: Fostering a Culture of Reflection and Growth	Nov. 10 (Zoom) 9 am - Noon
Session 7 (AM): Assessing the Evidence of Your Leadership Impact	Jan. 13 (FEA Conference Center)
Session 8 (PM): Final Evaluation to Future	9 am - 3 pm, Breakfast & Lunch

 For information, contact Heather Moran at [hmoran@njpsa.org](mailto:hmoran@njpsa.org).

